

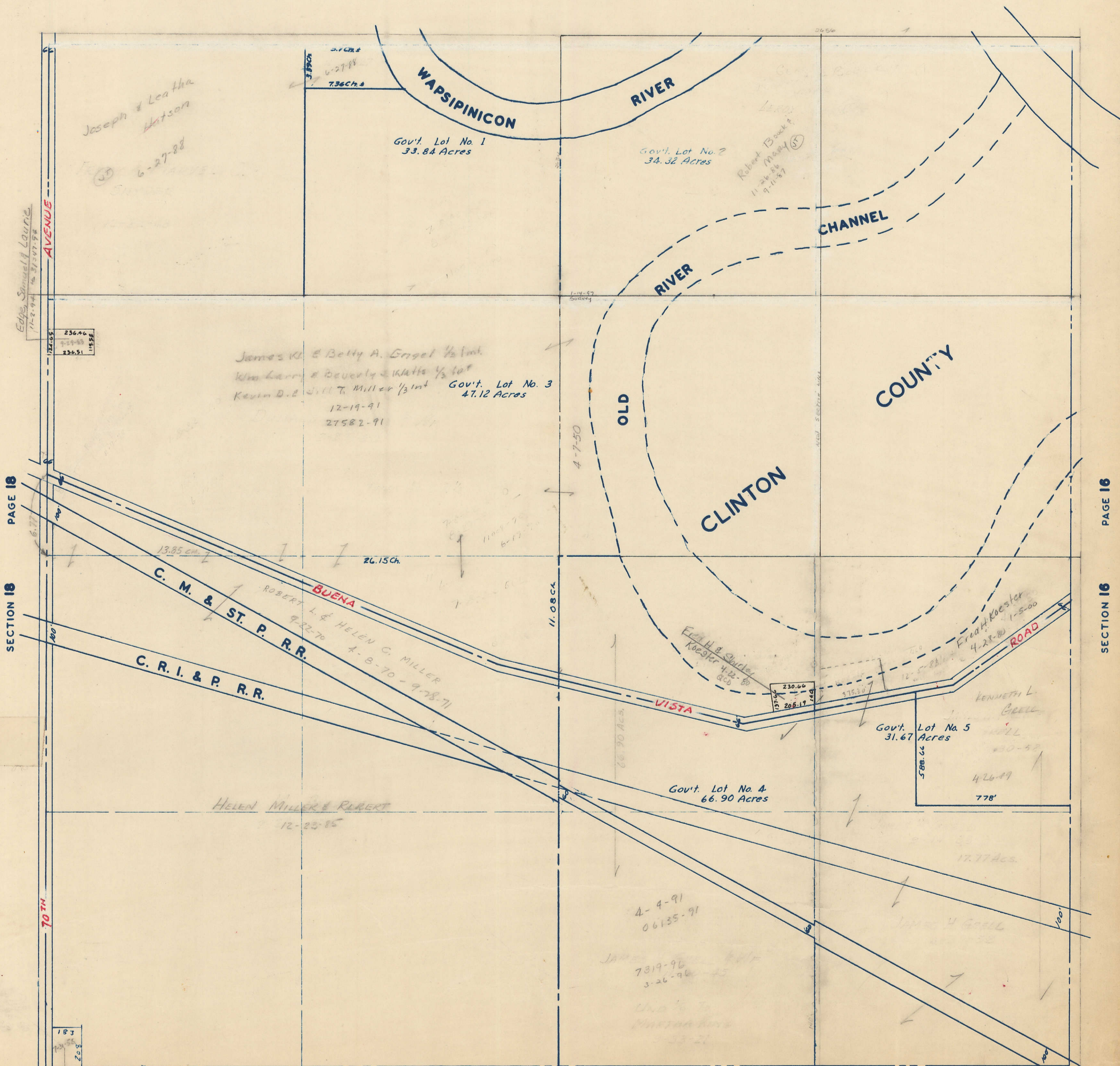
SECTION 17
TOWNSHIP 80 NORTH, RANGE 2 EAST,
5TH PRINCIPAL MERIDIAN
ALLENS GROVE TOWNSHIP
SCOTT COUNTY, IOWA

TRANSFER PAGE 12

SCALE: 1 INCH = 330 FEET

SECTION 8

PAGE 8



PAGE 18

SECTION 18

PAGE 16

SECTION 16

SECTION 20

PAGE 20

EASTERN IOWA
LIGHT & POWER CO.
7-21-5